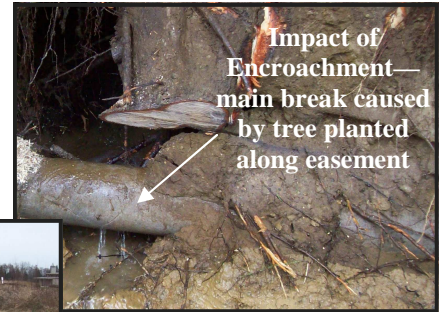


# Water *lines*

BIRCH BAY WATER AND SEWER DISTRICT  
SERVING THE GREATER BIRCH BAY AREA SINCE 1968

## Pipeline Easement & Rights-of-Way

The District is seeking cooperation from its customers to keep pipeline easements and rights-of-way free from encroachment. Examples of encroachment on pipeline easements include planting trees or ornamental brush along rights-of-way as well as parked cars, fencing and out buildings (garages, barns, portable sheds). This enables District personnel to easily access the entire water/sewer pipeline easement for routine maintenance or to repair unexpected broken water/sewer mains.



Impact of Encroachment—main break caused by tree planted along easement

Pipeline easements are identified with pipeline markers throughout the District. They serve as an important safety precaution for our customers. Typically, pipeline markers are found where a pipeline intersects a street, highway or traverse through open fields.



Example of Marker in an Open Field

For more information regarding pipeline easements and rights-of way, please contact the District at 360-371-7100.



## DISTRICT WELCOMES MEREDITH RILEY!

The District recently hired Meredith Riley to manage all District accounting, investing and budgeting functions. In addition to providing day-to-day financial management, Meredith is reviewing and updating District accounting procedures to ensure that ratepayer funds are protected from misuse. As needed, independent accounting firms will be employed to make certain that control procedures are appropriate and implemented properly. This is a special two-year assignment designed to address problems that came to light in January when the District's former Treasurer was terminated for misappropriating District funds. At the end of two years, it is anticipated that Meredith will assist the District in hiring a new finance director. Meredith earned a B.A. in Accounting from Western Washington University in 1989 and is a licensed Certified Public Accountant. She worked in a series of highly responsible positions in Blaine's Finance Department from 1991 until 2009, serving the last fourteen years as the City's Finance Director. Prior to working at Blaine, Meredith was employed in the State Auditor's Office. Welcome Meredith!



# The Art of Recycling Rain



The District is teaming up with Birch Bay Watershed Resource & Aquatic Management (BBWARM) to host a rain barrel workshop on Saturday, April 16th, for residences of Birch Bay. The workshop will cover the basic principles of rainwater collection and its benefit to water supply and stormwater management as well as hands-on instruction on how to install and maintain your very own rain barrel! Registered participants will take home a pre-drilled 55-gallon barrel. Supplies are limited and are on a first come, first serve basis.

Rainwater collection is the capturing and storing of rainwater from rooftops in a container until it is used for non-potable outdoor water uses when water is less abundant. It is during the warmer summer months – June through August – that the Pacific Northwest receives the least amount of rainfall. During this time, Birch Bay’s potable water systems experience peak demands up to three times higher than the average demand during winter months. Most of this increase in water usage comes from outdoor watering for lawns and gardens.

A rain barrel is the most common and simple way to collect and store rainwater from rooftops and downspouts. Rain barrels typically range in size from 55 gallons to 95 gallons and can be used alone or grouped together in connected sets. Collecting rainwater is a great way to reduce outdoor watering in the summer and it also helps reduce stormwater run-off that can cause flooding and carry pollutants into our waterways.

For more information or to register for the workshop, contact Birch Bay Water Conservation Specialist Emily Resch at 360-371-7100.



## SAVE THE DATE!

### “Rain Barrel Workshop”

**Date:** April 16th

**Time:** 10am - 12pm

**Place:** Birch Bay Water & Sewer

**Details:** Learn about rain barrels and how to make one. Free barrels available to class participants!

**Published by**  
 Birch Bay Water & Sewer  
 7096 Pt. Whitehorn Rd.  
 Birch Bay, WA 98230  
 Phone: (360) 371-7100  
 Fax: (360) 371-2806  
 Website: www.bbwsd.com

**Commissioners:**  
 Don Monfort  
 Carl Reichhardt  
 Patrick Alesse

**General Manager:**  
 Roger M. Brown

## How Do We Compare to Other Utilities?



In late 2010, the District approved a three percent rate increase to help cover system maintenance and upgrade costs. Even with the rate increase, the District has the lowest combined water/sewer rates in Whatcom County compared to other utilities.

Rates in the nearby table are based on a monthly average consumption of 800 cubic feet. It is important to note that the District’s billing cycle is every two months and the table reflects what a monthly bill would be.

CITY/DISTRICT	TOTAL MONTHLY BILL (800 CF)
BLAINE	\$119.90
LAKE WHATCOM	\$106.56
AVERAGE	\$79.07
NOOKSACK	\$75.00
LYNDEN	\$74.71
FERNDAL	\$74.06
BELLINGHAM	\$71.27
SUMAS	\$70.73
EVERSON	\$68.43
BIRCH BAY	\$50.98



### Fix a Leak Week

March 14-20, 2011

EPA WaterSense program is sponsoring “Fix a Leak Week” March 14-20 to remind Americans to check their plumbing fixtures and irrigation systems for leaks. The WaterSense website [www.epa.gov/watersense](http://www.epa.gov/watersense) offers useful tips and videos about leak identification and repair. For more information contact Emily Resch at 360-371-7100